

## Topband DF 22<sup>nd</sup> May 2016

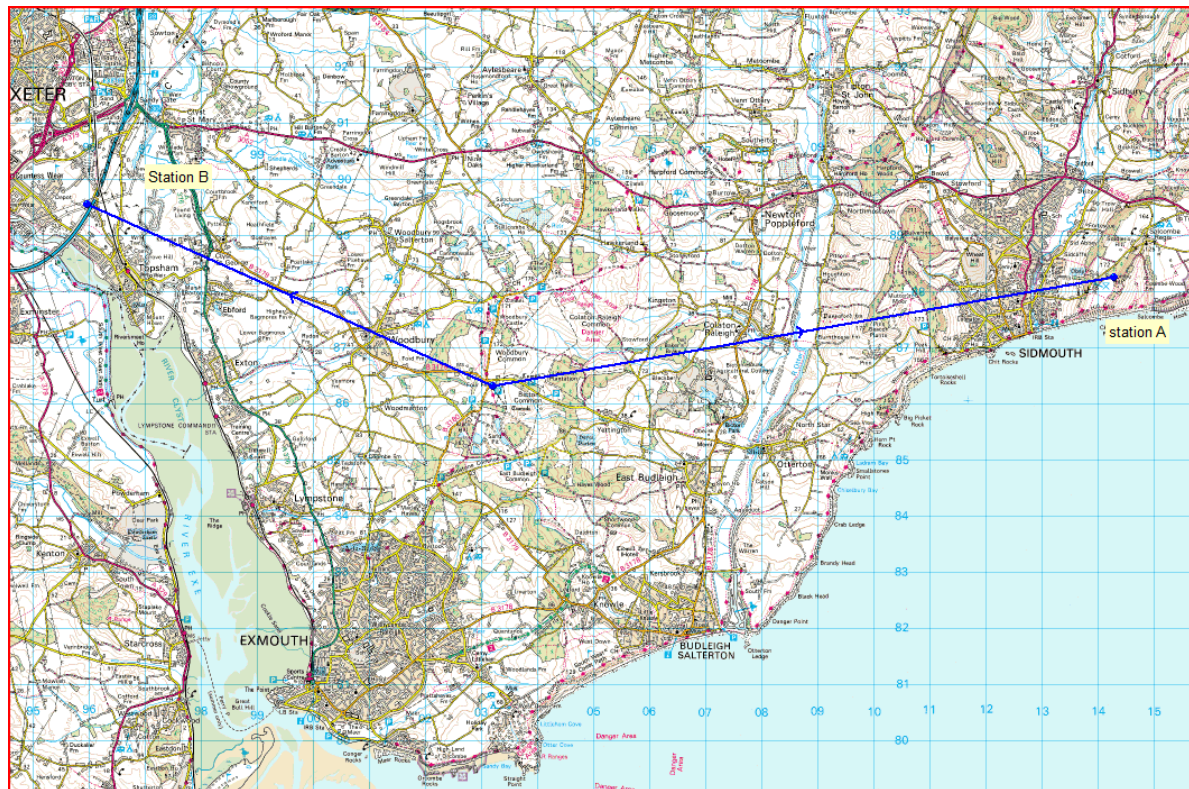
On the Saturday the Torbay team – Dick, Matt, Colin and me – spent all day putting up the two antennas. As you do. Unhappily all day Saturday was wet, wet, wet.

Luckily, Sunday seemed a much better prospect (except for the hailstorm in the morning and lightning and downpour at site A just before the start) and eventually it turned into a sunny, blue sky day.

We had six teams eager to start gathered at Woodbury common and two good signals were heard.



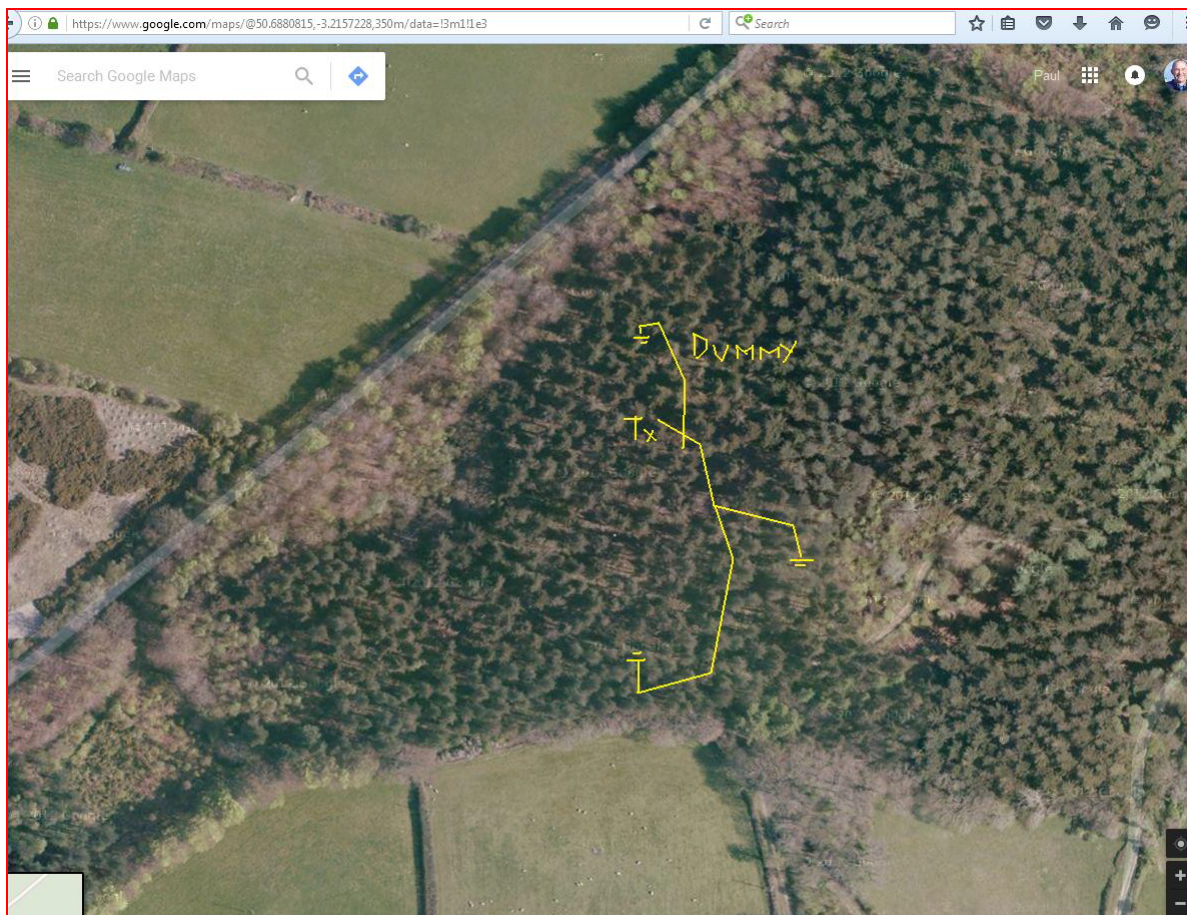
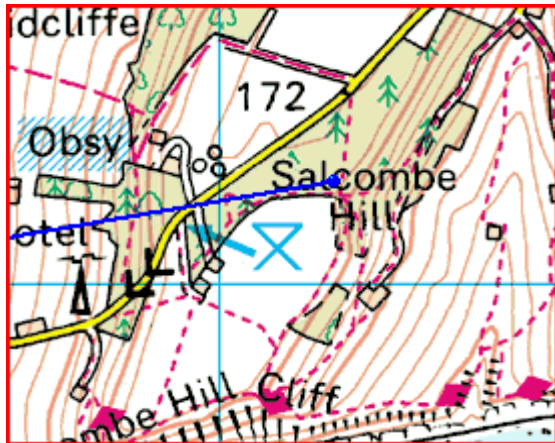
## The sites



From the start at Woodbury Common station A was on 1920kHz at 11km distance and on a bearing of 77deg in a wood to the East of Sidmouth. Station B was on 1940kHz and only 8km away on a bearing of 291deg adjacent to the motorway under power lines. Matt had found this site which had no obvious sign on the map but was a delightful dog walking common at the end of long access road.

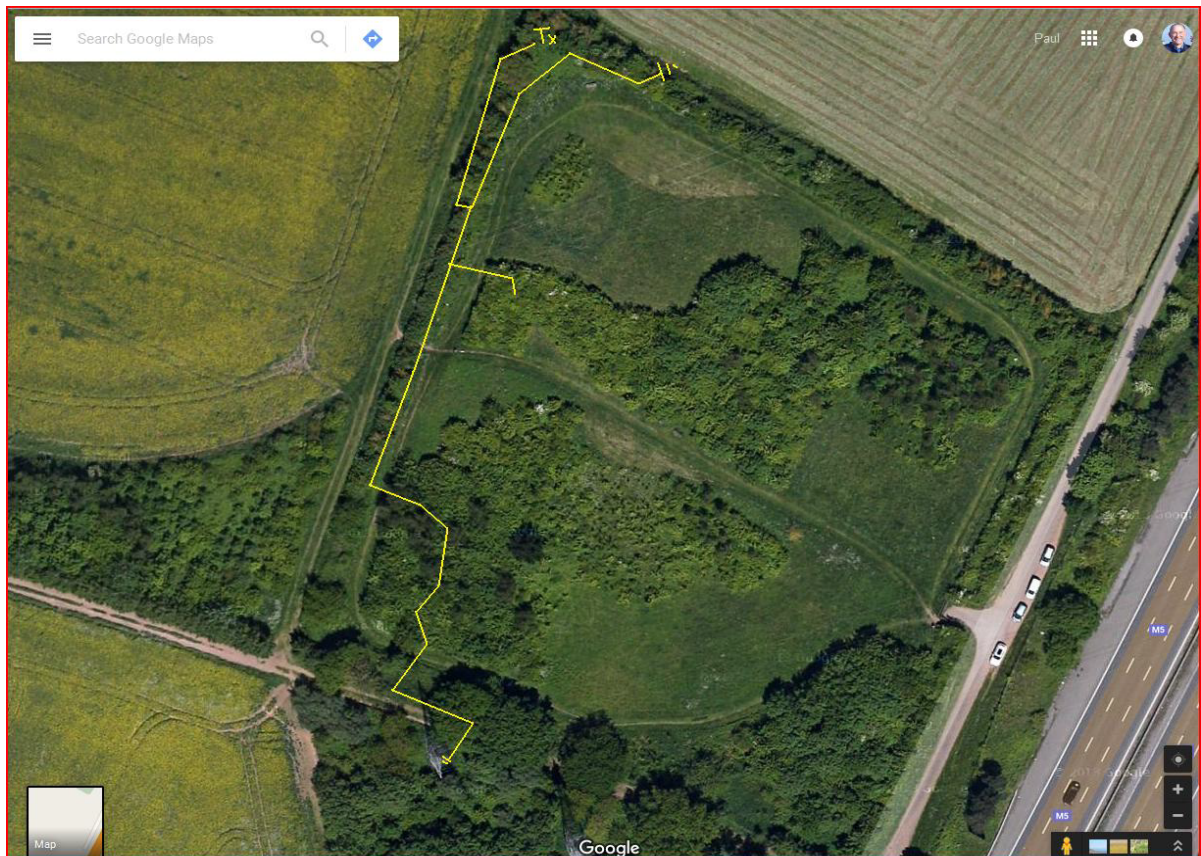
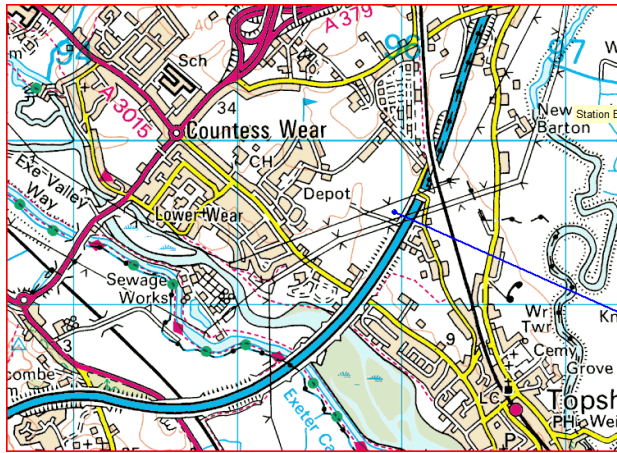


**Station A** was at Salcombe Hill, hidden not too far from the road in some dense woodland where many of the big trees had been blown over giving difficult terrain to cross. A lot of wire was used in the hopes of confusing the DF hunters. The operator was hidden in the root ball of a very large conifer that had been blown over.





**Station B (or Bridge over the M5- as Matt named it)** was hidden adjacent to the M5 motorway and near the rail line to the East of Exeter. No footpaths or greenery was obvious on the map with access to it over a road bridge at the end of a long country lane:-



But on the satellite view a good range of green cover is seen. Well done the Matthew for finding this site. There were several footpath access point to this green area and it is used by many dog walkers as we found when putting up the antenna. The aerial shot shows the antenna.

The event

Both stations were heard at the start and no approximates were needed.



All teams left and the event was on.

Five teams headed for Station A to the East and one to the West (Andy Collett).

At station A four of the five teams arrived on site at about 2:30pm and as soon as the transmission came on they soon located the transmitter but it was tricky to get into.

“Get your leg over” was the gracious offer of Rosie to Chris when he had difficulty getting up onto the large fallen tree which led the way into the dense undergrowth and to the transmitter hide.

Alan Simmons was the first to sign in followed quickly by Geoffrey, Rosie and Chris – then all was quiet.

Meanwhile, at station B Andy had had a very poor start bearing well to the south and so was waiting at 2pm for a cross near the river just below where the station was and so got a strong signal nearly due North. He rapidly ran the footpath by the side of the motorway and across the bridge to get to the B site. The large amount of wire and earth stakes did not slow him down for long before he was off to station A.

Andy then had more luck as, not sure which wood station A was in waited for a signal by the side of the correct wood, so when the signal came up he was straight in!

#### The results

Team	Finish	Time A	Time B
Andy Collett	152427	152427	142918
Bill and Doreen	161925	152447	161925
Colin and Rosie	162049	144239	162049
Chris Plummer	162400	144308	162400
Alan Simmons	143913	143913	
Geoffrey Foster	144127	144127	

The Tea was held at the Brewers Fayre Pub, Honiton Road, Exeter and we heard how the winner Andy won it

Thanks to all who put a great deal of effort and time into putting on a TopBand DF event.